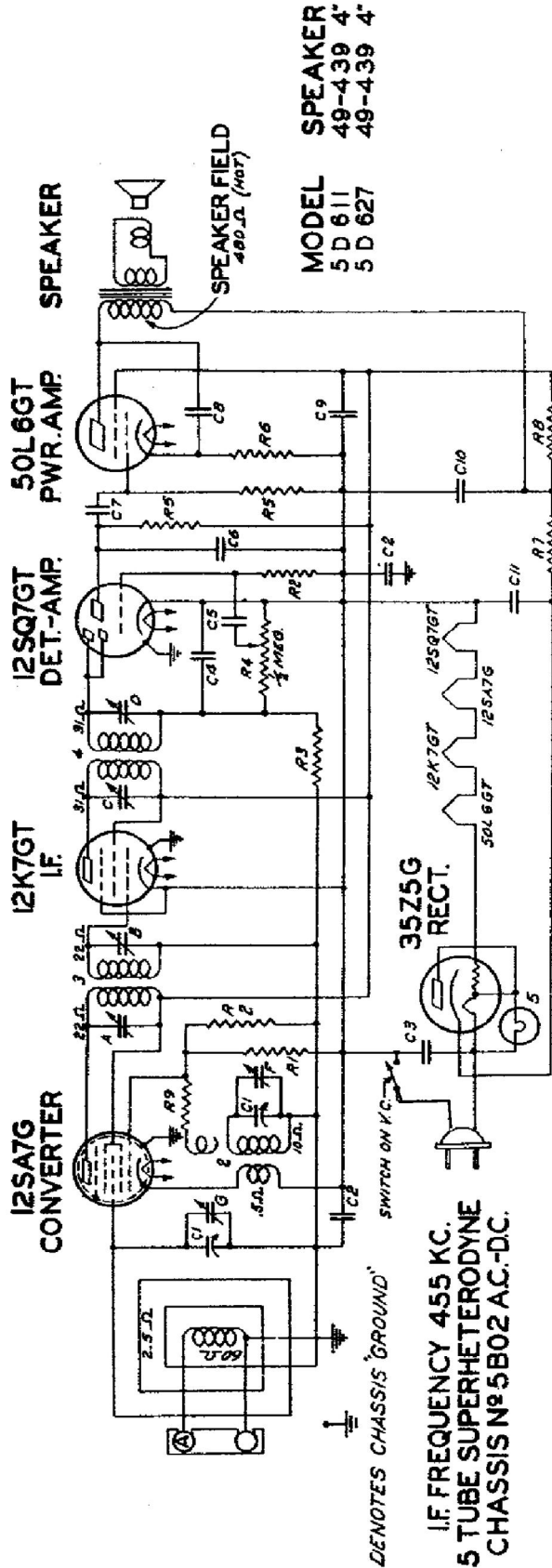
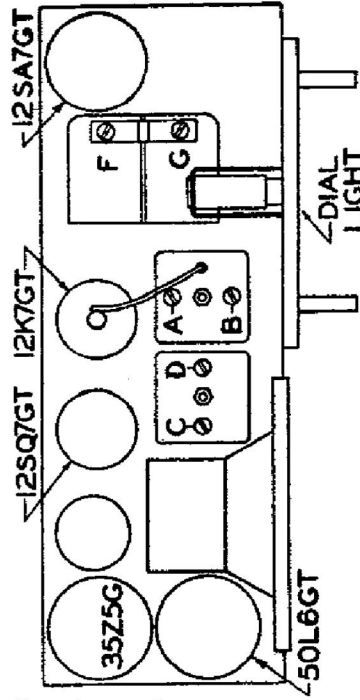


Chassis 5B02

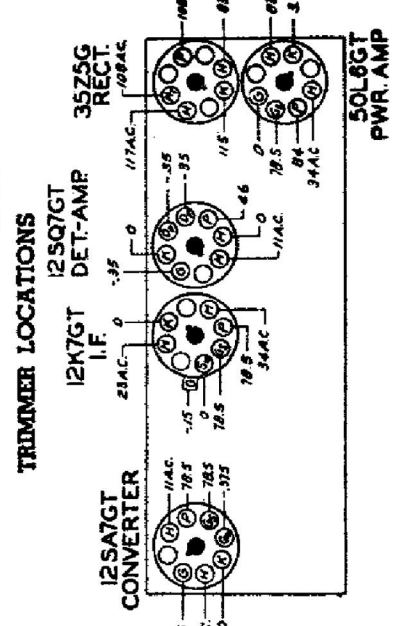


**SPEAKER**  
 MODEL 5 D 611 49-4.39 4"  
 5 D 627 49-4.39 4"

I.F. FREQUENCY 455 KC.  
 5 TUBE SUPERHETERODYNE  
 CHASSIS No 5B02 AC-DC.



Courtesy of nuow.com



Volume control full on.  
 Line voltage 117 A.C. or D.C.  
 Power consumption 29 watts.  
 Power output 1.3 watts.  
 Tuning Ranges 540 Kc to 1620 Kc.

Stage Gains:  
 Bc. and 455 Kc. I.F.  
 Ant. to Conv. grid 7X at 1000 Kc.  
 Conv. grid to I.F. grid 74X at 455 Kc.  
 Overall audio 225X at .05 watt.  
 400 cycles.

DIAG. PART NO.	DESCRIPTION	DIAG. PART NO.	DESCRIPTION	DIAG. PART NO.	DESCRIPTION
C1	12-1206 TWO-GANG VARIABLE	R1	63-589 10 M OHM	2	S 9450 DC COIL ASSEMBLY
C2	22-851 .05 MFD.	R2	63-576 .15 MEGOHM	3	95-696 2B I.F. TRANS.
C3	22-1071 .05 MFD.	R3	63-600 2.2 MEGOHM	4	95-794 2B I.F. TRANS.
C4	22-923 .0002 MFD.	R4	63-112 VOLUME CONTROL	5	100-67 PILOT LIGHT 6.3K .15A.
C5	22-424 .002 MFD.	R5	63-571 470 M OHM	A	12 I.F. TRANS. PRI.
C6	22-854 .0005 MFD.	R6	63-171 75 OHM WIREWOUND	B	2ND I.F. SEC.
C7	22-243 .01 MFD.	R7	63-172 100 OHM WIREWOUND	C	2ND I.F. PRI.
C8	22-1182 .01 MFD.	R8	63-173 1500 OHM	D	2ND I.F. SEC.
C9	22-1182 .01 MFD.	R9	63-579 220 OHM	E	BROADCAST OSC. (ON GANG)
C10	22-1186 .005 MFD.			F	BROADCAST ANT. (ON GANG)
C11	30 MFD. "			G	
					S 9619 HAIR-SPRING ASSEMBLY

Operation	Connect Test Oscillator to	Dummy Antenna	Input Signal Frequency	Band	Set Dial At	Trimmers	Purpose
1	Converter Grid	.1 mfd.	455 Kc.	—	600 Kc.	A, B, C, D	Align I. F.
2	Single Turn Loop coupled loosely to	—	1500 Kc.	—	1500 Kc.	F	Set Oscillator to Scale
3	Wave Magnet	—	1500 Kc.	—	1500 Kc.	G	Adjust for Maximum